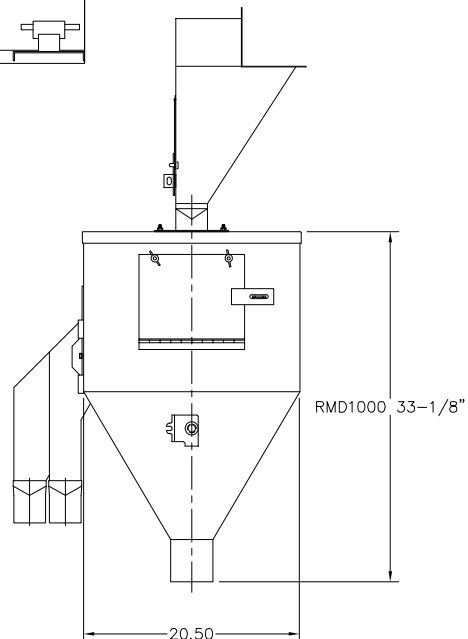
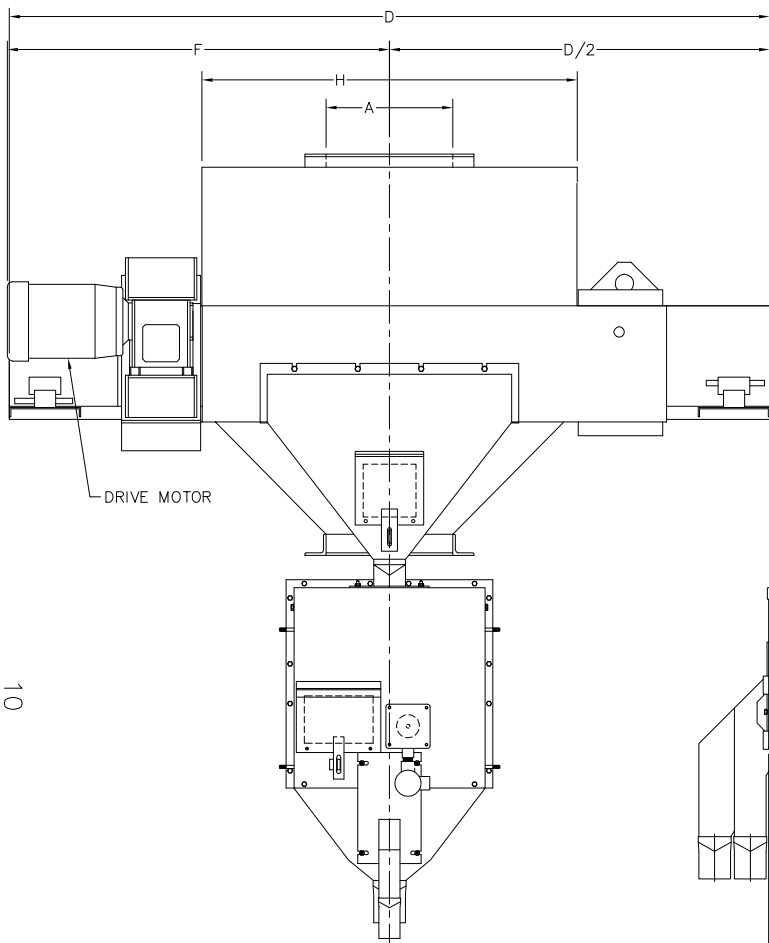
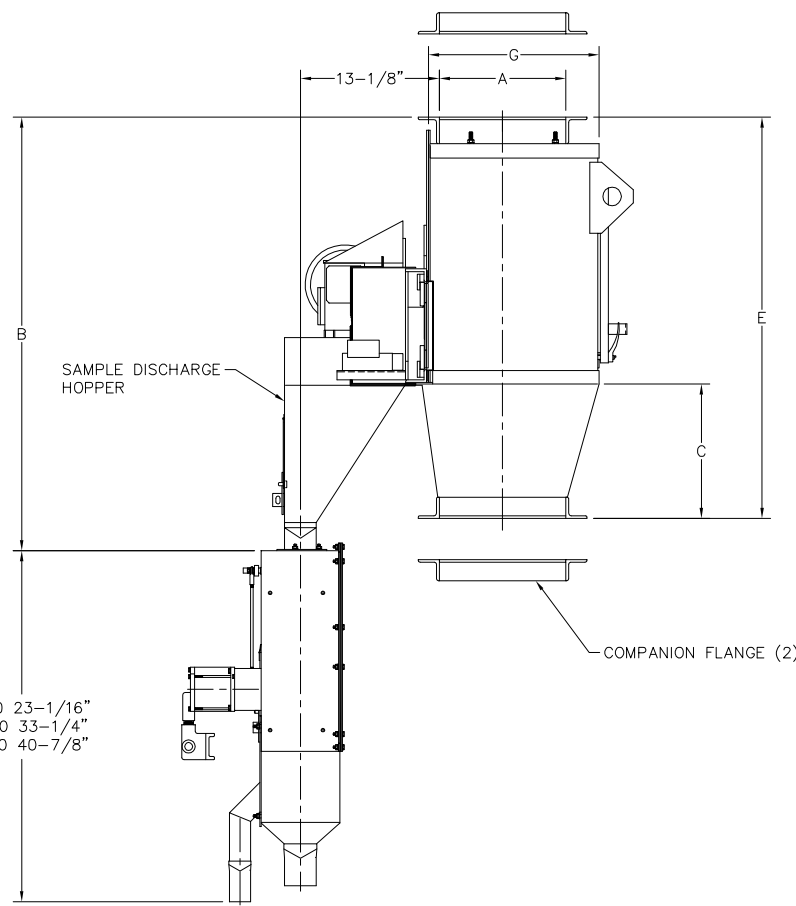




REV	DATE	DESCRIPTION	BY
-----	------	-------------	----



MD100 23-1/16"  
 MD200 33-1/4"  
 MD300 40-7/8"



**FOR REFERENCE ONLY**  
 INFORMATION SUBJECT TO CHANGE WITHOUT NOTICE  
 SEE ENGINEERING FOR LATEST REVISION

10

A	B	C	D	E	F	G	H	WEIGHT
8-10	36.00	10.75	56.00	32.00	36.00	12.00	24.75	450 LBS
11-14	41.00	12.75	72.00	38.00	40.00	16.00	32.75	625 LBS
15-18	46.00	12.75	84.00	42.00	50.00	20.00	36.75	850 LBS
19-22	52.00	12.75	96.00	46.00	52.00	24.00	40.75	1000 LBS
23-26	58.00	12.75	108.00	50.00	54.00	28.00	44.75	1125 LBS
27-30	64.00	12.75	120.00	54.00	56.00	32.00	48.75	1275 LBS
31-34	70.00	12.75	132.00	58.00	58.00	36.00	52.75	1425 LBS
35-38	76.00	12.75	144.00	62.00	60.00	40.00	56.75	1600 LBS
39-42	82.00	12.75	156.00	66.00	62.00	44.00	60.75	1800 LBS
43-46	88.00	12.75	168.00	70.00	64.00	48.00	64.75	2000 LBS

BUBBLE NO.	QTY	DESCRIPTION or MATERIAL AND SIZE	ITEM NUMBER	TOTAL UNITS
<b>BILL OF MATERIALS</b>				
TYPE -		U/M -	PRODUCT CODE -	
P/M CODE -			FAMILY CODE -	
CUSTOMER -			CUSTOMER P.O. -	
-			-	
-			ORDER NO. -	
<b>TOLERANCES</b>		QTY REQ'D	 13330 I St. Omaha, Ne. 68137 402-330-1500	
MANUFACTURED TO TYPICAL SHOP TOLERANCES UNLESS OTHERWISE SPECIFIED				
THIRD ANGLE PROJECTION		DESCRIPTION		
		90° CROSSCUT SAMPLER W/ DIVIDER CHART		
This drawing is the property of InterSystems, inc. The information herein is not to be used except as authorized by this company. Tracings or copies are not to be made without permission.		D'WN BY	DATE	ITEM NUMBER
		KMW	5/94	524740
		CK'D BY		ACAD FILE
SCALE	10	DRAWING NUMBER	A	SHEET 1 OF 1
				REV. A